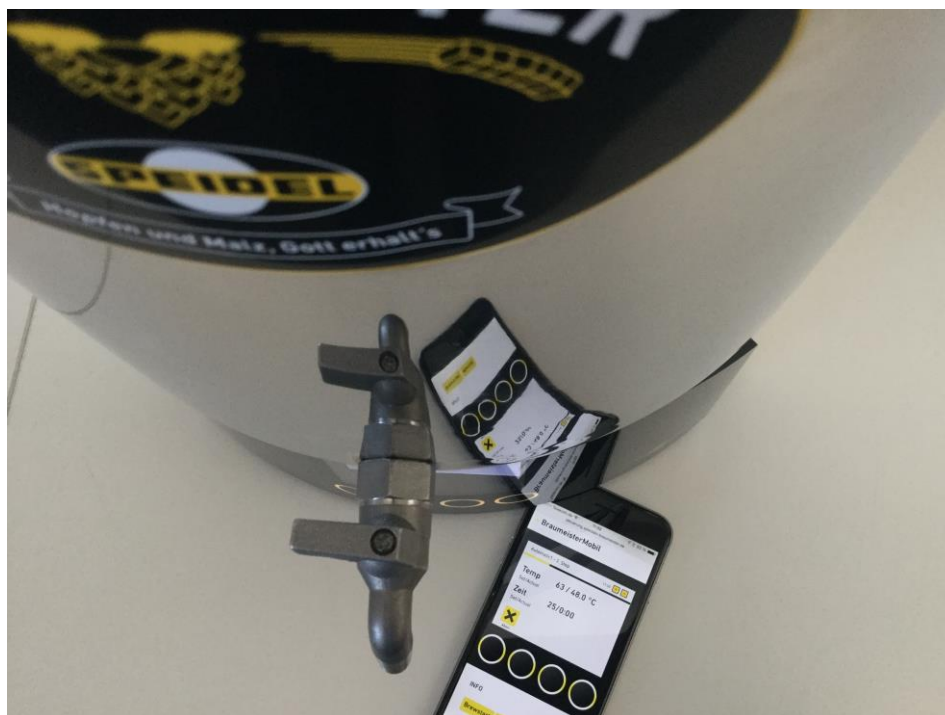




Translation from the German Original
Operating manual

BRAUMEISTERmobil

WiFi/Firmware updater module
Art No.: 77455



Last updated: February 2017



1	GENERAL.....	3
2	SAFETY INSTRUCTIONS:.....	3
3	COMPONENTS AND SCOPE OF DELIVERY	4
4	TECHNICAL DATA	4
5	DISPOSAL.....	4
6	QUICK REFERENCE GUIDE	5
7	CONNECTING TO THE BRAUMEISTER.....	5
8	UPDATE FIRMWARE.....	6
9	SETTING UP A WIFI CONNECTION	7
10	USING THE ONLINE SOFTWARE FOR BREWING.....	8
11	TROUBLESHOOTING.....	9
12	GUARANTEE CONDITIONS, HANDLING A GUARANTEE	10

1 General

Dear customer,

You have purchased a new device from our company. Thank you for your trust in our product. Quality and functionality of our products rate high on our list of priorities.

Intended use:

The BRAUMEISTERmobil module is designed to be connected to the brewing controller on the Braumeister Generation 2015 to both update the firmware and monitor the brewing process over WIFI.



Operating manual:

We have compiled this manual to ensure the reliable and safe commissioning and operation of the module right from the start. Please read the manual carefully and completely before continuing with the installation.



Declaration of conformity:

We, at SPEIDEL Tank- und Behälterbau GmbH, hereby declare that the product - BRAUMEISTERmobil - described in this manual and to which this declaration refers, complies with the policies of the following European Directives:

- Radio equipment and telecommunications terminal equipment 1999/5/EC
- Electromagnetic compatibility 2004/108/EC,
- Low voltage 72/23/EEC

Network standard: IEEE 802.11 b/g/n
ETSI EN 300 328 V1.8.1

Distributor:

Speidel Tank- und Behälterbau GmbH
Krummenstrasse 2
72131 Ofterdingen
Germany
www.speidels-braumeister.de
www.speidel-behaelter.de

2 Safety instructions:



- Only use the Braumeister in conjunction with the WIFI module when you can regularly monitor it personally. This means you should only use the module inside your own company WIFI network. Always make sure that the Braumeister is properly set-up and filled with water before starting the pump and heating it up over the WIFI module. **Fire hazard!**



- When performing cleaning activities on the Braumeister and the WIFI module, always ensure that the plug is disconnected (disconnection from the mains). Do not spray the device down or allow spray to come into contact with electric components. **Danger of electric shock!**



- After removing and unplugging the module on the reverse side of the Braumeister controller, you should close the plug connection again with the dummy cap to prevent water or contamination entering. **Danger of electric shock!**
- For the sake of their safety, keep any packaging (cardboard, polystyrene, etc.) out of the reach of children at all times. Do not allow small children to play with foil. Danger of **suffocation!**

3 Components and scope of delivery

The delivery package contains the module housing in black anodised aluminium with a mounting clamp on the reverse side, adjustable external antenna and a 40cm long cable fitted with a cable gland. A USB connection cable for connecting the WIFI module to a PC is also included in delivery.



4 Technical data

Network standard:	IEEE 802.11 b/g/n
Max data rate:	65 Mbit/s
Software update:	Minimum system requirements: Windows 7
Security standard:	WPA2 (default setting)
Protection class:	IP 40

5 Disposal



Meaning of the “refuse bin” symbol on the module: Protect our environment; electrical appliances should never be disposed of in your household waste. Make use of the collection depots provided for disposing of electrical appliances and deposit any electrical appliances you no longer require at these depots. You can get information on where to dispose of your old appliances from your local authorities.

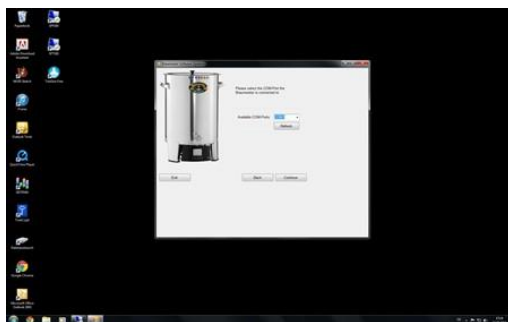
6 Quick reference guide

We have briefly summarised the individual steps for setting up the WIFI module below. Each individual step is explained in detail in the sections that follow:



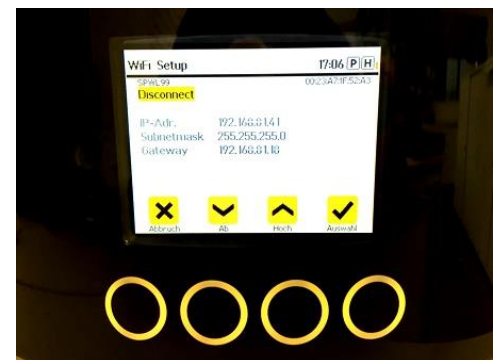
Remove the WIFI module from the protective carton and mount it on a Braumeister base. Plug the cable gland into the free socket on the reverse side of the Braumeister controller and tighten (connect the temperature sensor as well).

Update the firmware. At least Version 1.24 should be installed on the device to be able to use the WIFI module (you can see the version number clearly in the *Settings* menu). To do so, download the update software and the latest firmware version from our website at www.speidels-braumeister.de/downloads.html You will find all the files in the .zip file stored in one folder.



Connect the module (port on the side of the module) to your PC using the USB cable. Wait until your operating system automatically finds a suitable driver and installs it. You should then connect the Braumeister to the mains. Launch the *software updater* and transfer the latest firmware (hex file) to the controller. Unplug the Braumeister and remove the USB cable. The latest version should now be on the controller.

Go to *Settings* and then *WIFI*. Click on *Scan* to search for available networks. Select the most suitable network, enter your password (max. 31 signs) with the arrow keys, if necessary delete detached signals/blank space with *Abandon* and click on *Connect*. The controller shows an IP address if a connection is made. This IP is needed to edit a new device on www.MySpeidel.com. It's also possible just to enter the IP address into the browser. With MySpeidel you can sync recipes to the Braumeister and monitor the whole brewing process. The device and Braumeister has to be connected to the same WIFI network.



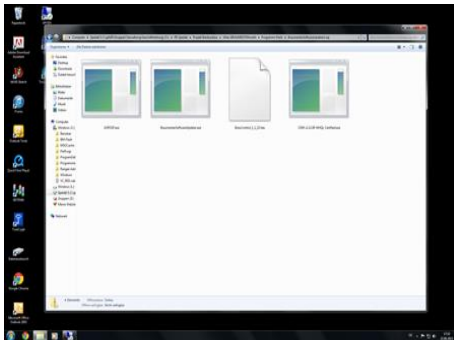
7 Connecting to the

Braumeister



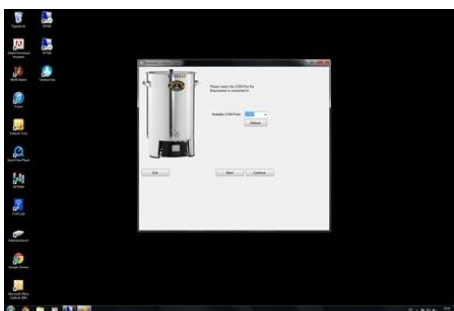
Remove the WIFI module from the carton and clip the module to the side-base on the Braumeister using the clamp on the reverse side of the module. In the beginning, this type of clamp is always very stiff, in order to make sure that module remains tightly clamped to the base. The module is clamped to the side of the controller on the 200l and 500l operating models. On the reverse side of the controller on the new 2015 generation, you will find another screw connector next to temperature sensor connector. Plug the module into this connector and screw it tight. The module is now ready for further use.

8 Update firmware



Go to www.speidels-braumeister.de/downloads.html and download the *Braumeister Software Updater* .zip file to your PC. Unzip the files and save them all in a single folder. The .zip file contains the *Software Updater*, driver (only required if your operating system fails to find the driver automatically) and latest firmware version of the Braumeister controller, *BrewControl_x_x.hex*.

The USB cable included in delivery is used to connect your PC and the WIFI module. Open the rubber cap on the side of the module and connect the mini-USB. Plug the other end into a free USB port on your PC. The Braumeister controller is still not connected to the mains. Have your operating system (e.g. Windows 7 or higher) search for a driver for the USB connection automatically.



Connect the Braumeister controller to the mains. The screen remains blank. Now launch *Software Updater.exe*, select the port which connects the Braumeister to your PC and click on *continue*. Then select the path to the latest firmware version, which should be in the same folder as the updater.



Click on *Update*. The latest version will now be transferred to your device. This may take several minutes. If the software reports a successful update, unplug the USB cable from the PC and the module, disconnect the Braumeister from the mains, wait a few seconds and then reconnect the controller to the mains. The screen becomes bright again, displays a *Launch Wifi* message and should now have the latest software version installed (visible under *Settings*).

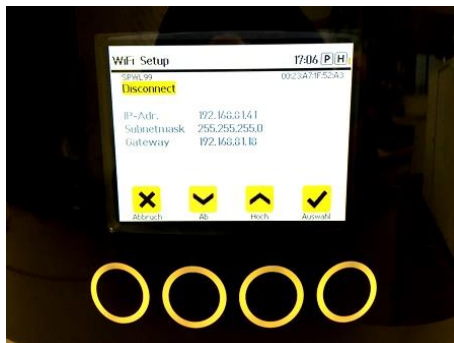
9 Setting up a WIFI connection



fails to function)



address. Make a note of the IP address and click on *Cancel* to return to the default setting for the Braumeister (if the IP address fails to be assigned automatically or it has been changed, then go to *DHCP* to enter the correct data).



The requirement for using WIFI with MySpeidel.com is firmware version 1_1_24 or higher (the version number can be seen at the top right under *Settings*). Go to *Settings* and then click on *WIFI*.

Run a full scan first to find the WIFI networks available in your area. Make sure that your preferred wireless router is in operation. The controller now lists the networks found (go to *Enter SSID* to verify/modify the advanced settings for the WIFI network. Security standard: only to be used if the automatic connection

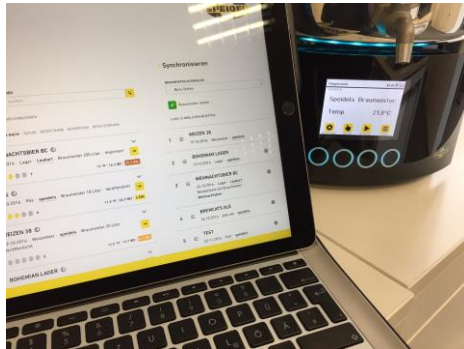
Select the network you wish to use using the arrow keys, and enter the WIFI password under *PSK* (Pre-shared key) with the same arrow keys (max. 31 signs) Click on *Select* to confirm each digit/number. After entering the last number/digit, go to *Connect* using the arrow keys. Please make sure that there is no blank space or pre-set ciphers behind your password. If necessary, delete them with *Abandon* before proceeding (otherwise malfunction message *OAEB* will occur). The Braumeister should now be connected to the WIFI network and display an IP

Now enter the IP into your browser (Safari, Firefox, Chrome, etc) on the device connected to the same WIFI. The web application, BRAUMEISTERmobil, should now open and display the same data as your Braumeister. You can now use some of the functions of your Braumeister over the device (e.g. Start recipe) and, above all, monitor the status of the device (Monitoring). Only one person can be logged onto the Braumeister at any time.

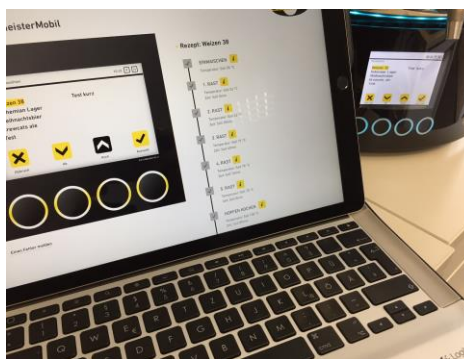


Caution: Make sure no unwanted switching on the pump and/or heater takes place. Make sure that the water has been topped up before starting a recipe. Make sure that combustible materials are kept well away from the brewing device. Use the WIFI on the company network to make sure you are in range of the device and can intervene if necessary.

10 Using the online software for brewing

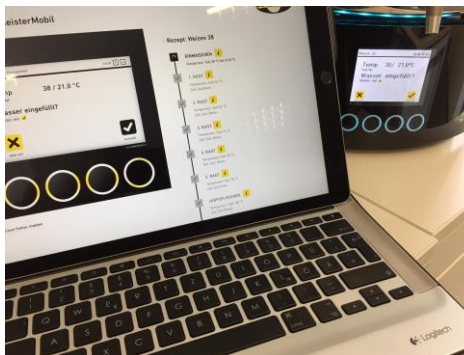


Go to www.myspeidel.com and create your own account. Now you can edit your devices, develop, save and share your recipes and also sync it to your Braumeister. Further devices like Gärmeister or GÄRSPUNDmobile are managed with this account. With the IP address of the Braumeister you can register your devices in this account.



On MySpeidel you can call up the monitoring software and with some delay the data from the controller will be displayed.

In the yellow status bar at the top, you will find the most important information on the Braumeister status, such as temperature, connection status and last update. The data is routinely updated every few seconds. The display is responsive and is displayed optimally both horizontally and vertically.



An image of the Braumeister controller is displayed. You can intervene in a controlled manner by starting a recipe, or manually, by turning the heater and pump on/off. Changing settings are made at the device manually and recipes are changed and developed with MySpeidel. In an emergency, the programme can also be stopped and terminated online.

When selecting and starting a recipe, the time-line for the entire brewing process appears in addition to controller view. Here you can see more easily at what stage in the process you are at, and which phases are still pending. Novices can access additional video and text-based information about the individual brewing phases by clicking on the Information icons.

The language for the software is defined by the language selected on the Braumeister controller (English, German, French, Spanish). If you want to change the language and you have already used the software in another language, you first need to delete the chronicle on the device and open the software again by re-entering the IP address.



11 Troubleshooting

Problems when brewing:	Troubleshooting
<i>Firmware fails to update</i>	If the operating system on your PC fails to find a driver independently, then use the driver supplied in the .zip file you have downloaded. Run the <i>CDM.exe</i> file. Be sure that all files are in the same folder.
<i>The BRAUMEISTERmobil software fails to load</i>	Make sure that the WIFI is connected to the Internet.
<i>The Updater-Software cannot recognize the correct Port (COM-connection)</i>	The software proceeds by running the first 8 ports. Please make sure that the connection cable is attached to one of the first eight ports. The new Updater delivered with 1.1.24 finds port up to 99.
<i>Update is canceled after 25% and reports successful update when actually there is no firmware version on the device</i>	Make sure the Braumeister is connected to a power source during the whole updating process (display remains black)
<i>WIFI connection cannot be established</i>	Check if the password you entered is correct. Check if a common security standard is used. To do so, go to <i>Enter SSID</i> . You can manually change all the data for the network here.
<i>The Internet-software BRAUMEISTERmobil is loaded while there is no data being sent from the Braumeister.</i>	Make sure your router is allowing the communication of several WIFI devices among themselves. See safety instructions in the WIFI-range of the router.
<i>Return of the IP address 0.0.0.0</i>	Safety-standards are not the same. Please insert the data manually in the menu DHCP of the Braumeister.
<i>Poor connection</i>	Check the antenna if screwed correctly and plane and be sure that the antenna connection to the device is with a pin in the middle.
<i>Error code OAEB</i>	The password has not been inserted correctly. Check your password. Make sure there is no blank space or pre-set ciphers after your password, if your password does not fill the whole length. Delete with <i>Abandon</i> .
<i>Error code 08F8</i>	Password error
<i>Error code 0AFD</i>	Security standard of the WIFI is not the same
<i>Error code 0XF4</i>	A wrong character/ sign is used on the router which cannot displayed the Braumeister
<i>Error code 0701</i>	Too long password (max. 31 signs) or too long router name.



12 Guarantee conditions, handling a guarantee

Conditions:

- Statutory guarantee conditions apply. The guarantee period for users is reduced to the regulations applicable to commercial customers to the extent that they are making use of a device suitable for commercial use, including in part.
- Transmission of a copy of proof of purchase is a prerequisite for guarantee claims against us or one of our dealers. For verification of the guarantee refer to the note on handling a guarantee below.
- For quick processing of guarantee claims, please inform us immediately in writing upon noticing defects, and include a fault description and photos where applicable.
- No guarantee is given for defects due to non-adherence to the operating instructions, improper treatment or normal wear and tear of the device. Guarantee claims are also excluded in terms of brittle components or expendables such as seals or similar. Finally, guarantee claims are excluded where work is performed on the device by non-authorised parties.

Handling:

Should your device display any defects within the guarantee period, please inform us of your guarantee claim. The fastest and most convenient option is to return the device or the notice of defect to the dealer/agent responsible or directly to us:

Email to: verkauf@speidel-behaelter.de or by fax to: **0049 7473 9462 99**

Please provide us with your **full address including contact details**. In addition, we require the **type designation** of the device in question, a short **fault description** including **photos, where applicable**, the **purchase date (copy of invoice)** and the dealer from whom you purchased the new device.

After verifying your notification of defect, we will contact you as soon as possible to agree the next step. Please, under no circumstances, send us your device by Carriage Forward.



de	Sollte die beiliegende Betriebsanleitung nicht in einer für Sie verständlichen Sprache vorliegen, so kontaktieren Sie diesbezüglich bitte Ihren zuständigen Händler.
en	If you don't have a manual in any comprehensible language, please contact your local dealer or distributor.
fr	Si les instructions accompagnant dans une langue qu'ils comprennent, vous donc s'il vous plaît contacter votre revendeur local.
es	Si las instrucciones que acompañan estar en un idioma que comprendan, que por favor contacte a su distribuidor local.
pt	Se as instruções que acompanham estar em uma linguagem que eles entendem, você por favor contacte o seu revendedor local.
pl	Jeśli instrukcje towarzyszące są w języku, który rozumieją, tak, proszę skontaktuj się z lokalnym dealerem.
no	Hvis instruksjonene som følger med være på et språk de forstår, du så ta kontakt med din lokale forhandler.
fi	Jos ohjeet mukana olevan he ymmärtävät, olet niin ota yhteyttä paikalliseen jälleenmyyjään.
sv	Om instruktioner vara på ett språk de förstår, behåga dig så kontakta din lokala återförsäljare.
da	Hvis anvisningerne ledsager være på et sprog, de forstår, så du bedes kontakte din lokale forhandler.
it	Se le istruzioni che accompagnano in una lingua che capiscono, ti prego pertanto di contattare il rivenditore locale.
el	Εάν οι οδηγίες που συνοδεύουν να είναι σε γλώσσα που κατανοούν, σας γι 'αυτό παρακαλώ επικοινωνήστε με τον τοπικό σας αντιπρόσωπο.
hu	Ha a mellékelt használati utasításnak kell olyan nyelven, amit megértene, akkor ezért kérjük, forduljon a helyi forgalmazóhoz.
nl	Als de instructies die bij in een taal die zij begrijpen, je zo kunt u contact opnemen met uw lokale dealer.
ro	Dacă vă lipsește manualul de instrucțiuni într-un limbaj accesibil, vă rugăm să contactați distribuitorul local
ru	Если Вы не нашли инструкцию на доступном Вам языке, пожалуйста свяжитесь с вашим местным диллером или дистрибьютором.
sk	Ak Návodý príložený byť v jazyku, ktorému rozumie, si tak obráťte sa na miestneho predajcu.
sl	Če navodila, ki spremljajo, so v jeziku, ki ga razumejo, zato vas prosimo, obrnite na lokalnega prodajalca.
bg	Ако инструкциите, придружаващи се в разбираем за тях език, можете да се обърнете към местния дилър.
sr	Ако се прате упутства бити на језику који они разумеју, тако да вас молимо да се обратите свом локалном дистрибутеру.
hr	Ako upute prate se u jeziku koji razumiju, pa vas molimo da se obratite svojem lokalnom zastupniku.
cs	Pokud Návodý přiložené být v jazyce, kterému rozumí, jsi tak obráťte se na místního prodejce.
tr	talimatları anladıkları bir dilde olması eşlik ederseniz, bu nedenle yerel satıcınıza başvurun.
zh	如果指示随行在他们理解的语言，所以请您联系当地的经销商。
ja	命令は、彼らが理解できる言語になるに伴う場合は、そのお近くの販売店に連絡してください。
ko	지침 그들이 이해하는 언어에 동행하는 경우, 당신은 귀하의 지역 대리점에 문의하시기 바랍니다.
th	หากคำแนะนำการประกอบอยู่ในภาษาที่พวกเขาเข้าใจคุณดังนั้นโปรดติดต่อตัวแทนจำหน่ายในประเทศของคุณ
vi	Nếu các hướng dẫn đi kèm có trong một ngôn ngữ mà họ hiểu, bạn nên xin vui lòng liên hệ đại lý địa phương của bạn.